

 XGRIDS



LixelKity K1  
Compact Yet Powerful



# LixelKity K1

The Lixel K1 redefines portable 3D scanning with its seamless fusion of panoramic imaging and 360° LiDAR in a palm-sized device. It delivers professional-grade colored point clouds instantly—transforming complex spatial capture into a simple handheld experience for experts and enthusiasts alike.



1kg



Real-time color  
point cloud



360°  
coverage



One-hand  
operation



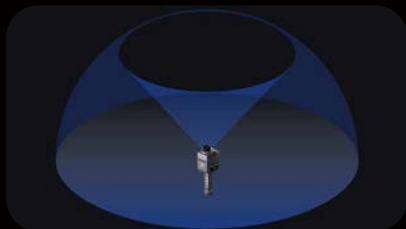
## Compact and Lightweight

1kg aluminum alloy body with integrated vision modules and LiDAR.



## True-Color Point Cloud

Real-time detailed point clouds in color for immediate visualization.



## Complete Panoramic Capture

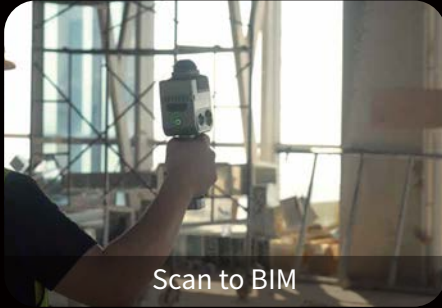
360° × 360° panoramic vision with 360° horizontal scanning from LiDAR ensures no detail is missed.



## Intuitive Operation

Walk-and-scan operation makes professional 3D scanning accessible to everyone.

# Application Scenarios

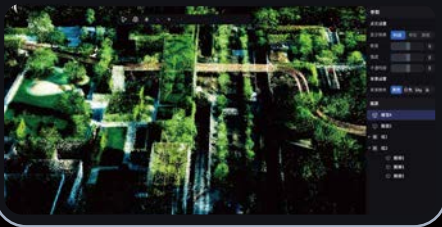


# Software

PC



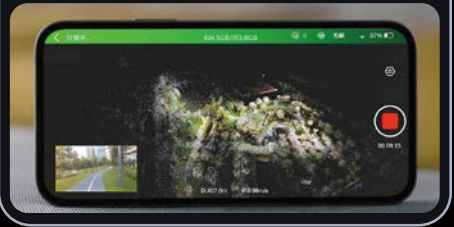
Complete point cloud workflow: capture, edit, process  
Industry-standard file compatibility (.las, .ply) and plugins  
Advanced visualization and analysis tools



APP



Control scanning directly from your smartphone  
Monitor real-time data collection progress  
Instant point cloud quality verification



# Specification

## Device Performance

Power Input	14.4V
Power Consumption	<20W
Weight	1kg
Data Interface	USB3.1 Gen2
Storage Capacity	TF card 256G
Connection Mode	Wifi/Bluetooth
Operating Temperature	-20°C~50°C
Protection Level	IP54
Product Shell	Navigational Aluminum
Power Supply	Fast-lock Battery/External Power
Operating Time	1.5h
Battery Capacity	28.8Wh
Number of Cameras	4
Visual-Aided Positioning	Supported
APP WiFi Distance	20m
RTK Module	Supported

## Scan Performance

Laser Class	Class1 / 905nm
Relative Accuracy	1.2cm
Absolute Accuracy	3cm
Repeat Accuracy	2cm
Horizontal Accuracy	0.015°
Working Range	0.1m~40m@10%, 70m@80%
LiDAR FOV	360° × -7~+52°
Scan Mode	Mobile
Scan Speed	200,000 Points/s

## Visual Module

Camera FOV	Color Panorama HDV 360° × 360°
Camera Resolution	48MP × 2
Panoramic Image Resolution	Max 56MP

## Data & Storage

Calculating Mode	Real-time calculating / Mixed calculating
Calculating Software	Lixel Studio post-processing software for Windows
Point Cloud Format	.las
Color Point Cloud	Supported

## Contact Us

Sales and Partners: [sales@xgrids.com](mailto:sales@xgrids.com)

Brand and Business Consulting: [enterprise@xgrids.com](mailto:enterprise@xgrids.com)

## Follow Us



LinkedIn



YouTube



Facebook



X

Company Address: XGRIDS LIMITED, SHOP185 G/F, HANG WAI IND CTR, NO 6 KIN TAI ST TUEN  
MUN NT, HONGKONG  
Contact Phone: 0755-86548235  
Company Website: [WWW.XGRIDS.COM](http://WWW.XGRIDS.COM)

\*Copyright belongs to Shenzhen XGRIDS Innovation Technology Co., Ltd. Reproduction is authorized only with permission.